



The pinnacle of performance and security

HP LaserJet Enterprise M61 1dn and M612dn



The world's most secure printing¹



High-speed performance



Powerful printing. Energy smart.²

The world's most secure printing¹



Only HP enterprise printers repair themselves from attacks in real time while offering outstanding manageability. Automatically monitor threats, detect intrusions, and validate operating software while centrally managing your fleet with ease.



Always on guard

Only HP enterprise printers offer built-in security features that are always on guard.¹

- With HP Sure Start, each printer regularly checks its operating code and repairs itself from attempted hacks.
- Whitelisting checks firmware during startup to help ensure its authentic, good code—digitally signed by HP.
- Run-time intrusion detection continually monitors activity to detect and stop attacks, then automatically reboots.
- HP Connection Inspector inspects outgoing network connections to stop suspicious requests like malware.

Get instant notification of potential security issues so immediate action can be taken to prevent potential attacks. This printer works with leading Security Information and Event Management (SIEM) tools like Splunk, ArcSight, and McAfee.



Take security to the next level

Help protect your printer with more than 100 embedded security features.³ Protect information on the printer and in transit over the network. Store data on the optional 256-bit encrypted HP High-Performance Secure Hard Disk.

Add features such as card readers⁴ and more through the Hardware Integration Pocket.⁵ Equip your printer to store and protect larger files with the optional 1 GB memory upgrade. Further safeguard data stored on the printer—keys, passwords, certificates, and more—using the standard HP Trusted Platform Module.⁶

Easily develop, deploy, and integrate over 180 HP and third-party solutions with the HP Open Extensibility Platform. Optional HP Access Control solutions can help you reinforce security, while helping to reduce costs.



Centralise control to help build business efficiency

Centralise control of your printing environment with HP Web Jetadmin.⁷ Optional HP JetAdvantage Security Manager offers an effective, policy-based approach to help secure HP devices.⁸ Easily set security configuration policies and automatically validate settings across the fleet.

HP JetAdvantage Secure Print⁹ and HP Access Control (HPAC) help secure documents by requiring authentication to release print jobs. In addition, extend capabilities and easily customise with HPAC—integrate job accounting, manage rights, and establish quotas for things such as colour use. Save IT time and make printing easy for the entire enterprise by using a single driver for all HP devices.

► For more information

Fleet management

HP Web Jetadmin visit: hp.com/go/wja

Solution brief: <http://h20195.www2.hp.com/v2/GetPDF.aspx/4aa5-2719eew.pdf>

Video: <http://hp.brightcovegallery.com/solutions/detail/video/4271055504001/>

HP Universal Print Driver visit: hp.com/go/upd

Solution brief: <http://h20195.www2.hp.com/v2/GetPDF.aspx/4aa2-4781eew.pdf>

Security

HP JetAdvantage Security Solutions visit: hp.com/go/printsecurity

Solution overview: <http://h20195.www2.hp.com/v2/GetPDF.aspx/4aa3-1295eew.pdf>

Video: <http://hp.brightcovegallery.com/products/detail/video/4270905124001/>

HP JetAdvantage Security Manager visit: hp.com/go/securitymanager

Brochure: <http://h20195.www2.hp.com/v2/GetPDF.aspx/4aa3-9275eew.pdf>

Video: <http://hp.brightcovegallery.com/products/detail/video/4270837770001/>

High-speed performance

Get the job done with a printer equipped for high-speed performance and designed for energy efficiency. Be confident that your employees can speed through their tasks without interruption.

Keep business moving

Don't wait for documents—this printer prints your first page from ready/sleep mode as fast as 5.1/7.9 seconds.^{10,11} Get prints up to 71 pages per minute (ppm),¹² A4 (M612 series), with 85% duplex efficiency. Print on A5 paper in landscape mode at speeds up to 115 ppm (M612 series).¹³



Print directly from your smartphone, tablet, or notebook PC to your Wi-Fi Direct^{®14} enabled printer—without accessing the company network. Or choose managed mobile print solutions (HP PrinterOn Enterprise or HP Access Control) for advanced management and reporting capabilities.¹⁵

Loaded for productivity

Spend less time loading paper with a 4,400-sheet maximum input capacity.¹⁶ Options for this series include a 2,100-sheet paper feeder, a wheeled stand which helps you relocate the printer, and a five-bin stapler/stacker/mailbox with job offset. Standard and optional 550-sheet input trays fit a whole ream of paper and support paper sizes from A6 to 216 x 356 mm.



Equip employees to breeze through tasks with the adjustable 10.9 cm touchscreen control panel, which makes managing jobs at the printer simple and efficient. (For more information, see Appendix A on page 15.) An easy-access USB port on all models allows users to easily walk up and print.¹⁷

Designed to conserve

Help keep productivity up and energy use down. This efficient printer is designed for exceptionally low energy consumption—thanks to its innovative design and specially formulated toner.¹⁸



Help cut costs with HP Auto-On/ Auto-Off Technology¹⁹ and HP Instant-On Technology²⁰—intelligence that readies your printer right when you need it and turns it off when you don't. Support for thin media allows users to print on papers as light as 60 g/m².

Powerful printing. Energy smart.²



Get exceptional print quality and help protect your device, using Original HP Toner cartridges with JetIntelligence.



Exceptional print quality

Count on the advantages of Original HP Toner cartridges—performance, high quality, and dependability. Precision black toner is engineered to deliver consistent placement of toner particles and produce sharp text, bold blacks, and crisp graphics.



Help protect your investment

Don't put your printer—and print quality—at risk. Help retain the consistent Original HP quality you paid for with innovative anti-fraud technology. Enable office-wide adherence to printing policies with cartridge authentication technology.



Ready to work, right away

Speed through print jobs right out of the box. This printer is shipped with preinstalled, specially designed Original HP LaserJet toner cartridges with JetIntelligence. Auto seal removal enables simple and seamless cartridge replacement, so you can get back to business fast—without costly delays or frustrating messes.



Print uninterrupted and get more pages with optional high-yield and extra-high-yield cartridges²¹ (A/X/Y: 10,500/25,200/42,000 pages²²)

Get to know the HP LaserJet Enterprise M611dn



Series at a glance



Model (product number)	M611dn (7PS84A)
Print speeds (A4) ¹²	Up to 61 ppm
Control panel	10.9 cm colour touchscreen
Automatic two-sided printing	✓
Hardware Integration Pocket ⁵	✓
100-sheet tray 1 and 550-sheet tray 2	✓
550-sheet paper feeder ²³	Optional (up to four)
2,100-sheet paper feeder ²³	Optional
Envelope feeder	Optional (up to two)
Printer stand	Optional
5-bin stapler/stacker/mailbox with job offset	Optional
Direct mobile printing	Optional wireless direct ¹⁴ /NFC ²⁴
Wireless networking	Optional ²⁵
HP High-Performance Secure Hard Disk	Optional

Get to know the HP LaserJet Enterprise M612dn



Series at a glance



Model (product number)	M612dn (7PS86A)
Print speeds (A4) ¹²	Up to 71 ppm
Control panel	10.9 cm colour touchscreen
Automatic two-sided printing	✓
Hardware Integration Pocket ⁵	✓
100-sheet tray 1 and 550-sheet tray 2	✓
550-sheet paper feeder ²³	Optional (up to four)
2,100-sheet paper feeder ²³	Optional
Envelope feeder	Optional (up to two)
Printer stand	Optional
5-bin stapler/stacker/mailbox with job offset	Optional
Direct mobile printing	Optional wireless direct ¹⁴ /NFC ²⁴
Wireless networking	Optional ²⁵
HP High-Performance Secure Hard Disk	Optional

Paper-handling accessories



550-sheet paper feeder (LOH17A)



2,100-sheet paper feeder (LOH18A)



Envelope feeder (LOH21A)



Printer stand (LOH19A)



Stapler/stacker/ mailbox (LOH20A)

	550-sheet paper feeder (LOH17A)	2,100-sheet paper feeder (LOH18A)	Envelope feeder (LOH21A)	Printer stand (LOH19A)	Stapler/stacker/ mailbox (LOH20A)
Standard	M611x, M612x (one)				
Optional	Add up to four: M611dn, M612dn ²³	All models ²³	Add up to two: all models	All models	All models




What's new

HP LaserJet Enterprise M611dn compared to the HP LaserJet Enterprise M608 series and HP LaserJet Enterprise M605 series

HP LaserJet Enterprise M611dn	HP LaserJet Enterprise M608dn	HP LaserJet Enterprise M605dn
Up to 61 ppm, simplex; up to 50 ipm, duplex ¹²	Up to 61 ppm, simplex; up to 50 ipm, duplex ¹²	Up to 55 ppm, simplex; up to 36 ipm, duplex ¹²
FPO as fast as 5.1/7.9 seconds from ready/sleep ^{10,11}	FPO as fast as 5.1/7.9 seconds from ready/sleep ^{10,11}	FPO as fast as 7/9.5 seconds from ready/sleep ^{10,11}
100+ embedded security settings, ³ including HP Sure Start, run-time intrusion detection, whitelisting, HP Connection Inspector, and HP Trusted Platform Module	100+ embedded security settings, ³ including HP Sure Start, run-time intrusion detection, whitelisting, and HP Connection Inspector	HP Sure Start not available; Whitelisting and run-time intrusion detection available with firmware upgrade
Up to 1,200-sheet standard input (4,400 maximum ¹⁶); input trays hold 550 sheets; optional 5-bin stapler/stacker/mailbox with job offset	Up to 1,200-sheet standard input (4,400 maximum ¹⁶); input trays hold 550 sheets; optional 5-bin stapler/stacker/mailbox with job offset	Up to 1,100-sheet standard input (3,600 maximum ¹⁶); input trays hold 500 sheets; optional stapler/stacker/mailbox
RMPV of 5,000 to 25,000 pages ²⁶	RMPV of 5,000 to 25,000 pages ²⁶	RMPV of 5,000 to 16,000 pages ²⁶
Original HP Toner cartridges with JetIntelligence; Extra High Yield black (~42,000 pages) ^{21,22}	Original HP Toner cartridges with JetIntelligence; Extra High Yield black (~42,000 pages) ^{21,22}	Original HP Toner cartridges; High Yield black cartridges (~25,200 pages) ²²
10.9 cm (4.3-inch) color touchscreen	6.9 cm (2.7-inch) LCD with keypad	4-line display and use the 10-key pad

What's new

HP LaserJet Enterprise M612dn compared to the HP LaserJet Enterprise M609 series and HP LaserJet Enterprise M606 series

		
HP LaserJet Enterprise M612dn	HP LaserJet Enterprise M609dn	HP LaserJet Enterprise M606dn
Up to 71 ppm, simplex; up to 58 ipm, duplex ¹²	Up to 71 ppm, simplex; up to 58 ipm, duplex ¹²	Up to 62 ppm, simplex; up to 41 ipm, duplex ¹²
FPO as fast as 5.1/7.9 seconds from ready/sleep ^{10,11}	FPO as fast as 5.1/7.9 seconds from ready/sleep ^{10,11}	FPO as fast as 7/9.5 seconds from ready/sleep ^{10,11}
100+ embedded security settings, ³ including HP Sure Start, run-time intrusion detection, whitelisting, HP Connection Inspector, and HP Trusted Platform Module	100+ embedded security settings, ³ including HP Sure Start, run-time intrusion detection, whitelisting, and HP Connection Inspector	HP Sure Start not available; Whitelisting and run-time intrusion detection available with firmware upgrade
Up to 1,200-sheet standard input (4,400 maximum ¹⁶); input trays hold 550 sheets; optional 5-bin stapler/stacker/mailbox with job offset	Up to 1,200-sheet standard input (4,400 maximum ¹⁶); input trays hold 550 sheets; optional 5-bin stapler/stacker/mailbox with job offset	Up to 1,100-sheet standard input (3,600 maximum ¹⁶); input trays hold 500 sheets; optional stapler/stacker/mailbox
RMPV of 5,000 to 30,000 pages ²⁶	RMPV of 5,000 to 30,000 pages ²⁶	RMPV of 5,000 to 20,000 pages ²⁶
Original HP Toner cartridges with JetIntelligence; Extra High Yield black (~42,000 pages) ^{21,22}	Original HP Toner cartridges with JetIntelligence; Extra High Yield black (~42,000 pages) ^{21,22}	Original HP Toner cartridges; High Yield black cartridges (~25,200 pages) ²²
10.9 cm (4.3-inch) color touchscreen	6.9 cm (2.7-inch) LCD with keypad	4-line display and use the 10-key pad

Technical Specifications

	HP LaserJet Enterprise M611dn	HP LaserJet Enterprise M612dn
Product number	7PS84A	7PS86A
Control panel/data entry	10.9 cm colour touchscreen, plus Hardware Integration Pocket Easy-access USB	
Print speed¹²		
Simplex	Up to 61 ppm, A4 (65 ppm, letter) Up to 100/6 ppm, A5 (landscape/portrait) ¹³	Up to 71 ppm, A4 (75 ppm, letter) Up to 115/6 ppm, A5 (landscape/portrait) ¹³
Duplex	Up to 50 ipm, A4 (53 ipm, letter)	Up to 58 ipm, A4 (62 ipm, letter)
First page out¹⁰	As fast as 5.1 seconds from ready, A4 (5.0 seconds, letter); as fast as 7.9 seconds from sleep, A4 (7.8 seconds, letter) ¹¹	
Print resolution	FastRes1200 (600 x 600 x 8 dpi), 1200 x 1200 dpi (all models)	
Printing features	Print preview, print multiple pages per sheet (2, 4, 6, 9, 16), collation, watermarks, store print jobs, easy-access USB	
Processor	1.2 GHz (all models)	
Memory	512 MB, standard; 1.5 GB, maximum with purchase of 1 GB accessory DIMM (all models)	
Storage	4 GB EMMC non-volatile storage; Firmware encryption (AES 128 or AES 256) of customer/job data; Secure Cryptographic Erase – Job Data, Secure Erase – Disk Optional: HP High-Performance Secure Hard Disk, minimum 500 GB; AES 256 hardware encryption or greater; Secure erase capabilities (Secure File Erase – Temporary Job Files, Secure Erase – Job Data, Secure ATA Erase – Disk)	
Durability ratings		
Recommended monthly page volume ²⁶	5,000 to 25,000 pages	5,000 to 30,000 pages
Duty cycle ²⁷	Up to 275,000 pages	Up to 300,000 pages
Media specifications		
Input capacity	Up to 650 sheets (up to 4,400 maximum) Tray 1: Up to 100 sheets Tray 2: Up to 550 sheets	
Output capacity	Up to 500 sheets (standard); up to 1,300 sheets with optional 5-bin stapler/stacker/mailbox accessory	
Two-sided printing	Automatic	
Media sizes	Tray 1: A4, A5, A6, RA4, B5, B6 (JIS), Oficio (216 x 340 mm), 16K, 10 x 15 cm, postcards (JIS single and double), envelopes (C5, B5, C6, DL, ISO); letter, legal, statement, executive, Oficio (8.5 x 13 in), 3 x 5 in, 4 x 6 in, 5 x 7 in, 5 x 8 in, envelopes (No. 9, No. 10, Monarch (7 3/4)); Custom media sizes: 76 x 127 to 216 x 356 mm (3 x 5 to 8.5 x 14 in) Tray 2, optional trays 3, 4, 5, and 6: A4, A5, A5-R, B5 (JIS), 16K; letter, legal, executive; Custom media sizes: 99 x 148 to 216 x 356 mm (3.9 x 5.8 to 8.5 x 14 in) Duplex: A4, A5, RA4, B5 (JIS), Oficio (216 x 340 mm); letter, legal, executive Optional 2,100-sheet feeder: A4, A5, A5-R, B5 (JIS), 16K; letter, legal, executive	
Media weights	Tray 1: 60 to 200 g/m ² (16 to 53 lb) Tray 2+: 60 to 120 g/m ² (16 to 32 lb)	
Media types	Paper (plain, light, bond, recycled, heavy, extra heavy, cardstock, pre-printed, pre-punched, coloured, rough, heavy rough), mono transparency, labels, letterhead, envelope, heavy envelope	
Print languages	HP PCL 6, HP PCL 5 (HP PCL 5 driver available from the Web only), HP postscript level 3 emulation, native PDF printing (v 1.7), Apple AirPrint	
Fonts	105 internal TrueType fonts scalable in HP PCL, 92 internal scalable fonts in HP postscript level 3 emulation (Euro symbol built in); 1 internal Unicode font (Andale Mono WorldType); 2 Internal Windows Vista® 8 fonts (Calibri, Cambria); Additional font solutions available via third-party flash memory cards; HP LaserJet fonts and IPDS Emulation available at hp.com/go/laserjetfonts	
Connectivity	2 Hi-Speed USB 2.0 Host; 1 Hi-Speed USB 2.0 Device; 1 Gigabit Ethernet 10/100/1000T network	
Mobile printing	HP ePrint, ²⁸ Apple AirPrint, ²⁹ Mopria-certified, Google Cloud Print™ 2.0 Optional wireless direct, ¹⁴ NFC touch-to-print ²⁴ enabled with purchase of accessory	

	HP LaserJet Enterprise M611dn	HP LaserJet Enterprise M612dn
Network capabilities	Via HP Jetdirect Ethernet embedded print server supports: 10Base-T, 100Base-Tx, 1000Base-T; 802.3az (EEE) support on Fast Ethernet and Gigabit Ethernet; IPsec Optional 802.11b/g/n wireless networking enabled with purchase of accessory ²⁵	
Network protocols	Via built-in networking solution: TCP/IP, IPv4, IPv6 Print: TCP-IP port 9100 Direct Mode, LPD (raw queue support only), Web Services Printing, IPP 2.0, Apple AirPrint, ²⁹ HP ePrint, ²⁸ FTP Print, Google Cloud Print Discovery: SLP, Bonjour, Web Services Discovery IP config: IPv4 (BootP, DHCP, AutoIP, Manual, TFTP Config, ARP-Ping), IPv6 (Stateless Link-Local and via Router, Statefull via DHCPv6) Management: SNMPv2/v3, HTTP/HTTPS, Telnet, TFTP Config, FTP FW Download, Syslog Security: SNMPv3, SSL Cert Management, Firewall, ACL, 802.1x	
Security	Identity Management: Kerberos authentication, LDAP authentication, 1000 user PIN codes, optional HP and third-party advanced authentication solutions (e.g., badge readers) Network: IPsec/firewall with Certificate, Pre-Shared Key, and Kerberos authentication, Supports WJA-10 IPsec configuration Plug in, 802.1X authentication (EAP-PEAP, EAP-TLS), SNMPv3, HTTPS, Certificates, Access Control List Data: Storage Encryption, Encrypted PDF and email (uses FIPS 140 validated cryptographic libraries from Microsoft®), Secure Erase, SSL/TLS (HTTPS), Encrypted Credentials Device: Security lock slot, USB port disablement, Hardware Integration Pocket for security solutions, ⁵ Intrusion Detection with Red Balloon Security Technology – constant in-device monitoring for attacks, HP SureStart Secure Boot – BIOS Integrity Checking with self-healing capability, Whitelisting – loads only known good code (DLLs, EXEs, etc.) Security Management: Compatible with HP JetAdvantage Security Manager, ⁸ Device Security Syslog Messages processed and accessible in ArcSight, Splunk, and McAfee SIEMs	
Compatible operating systems³⁰	Windows® OS: Windows 10 all 32- and 64-bit editions (excluding RT OS for Tablets), Windows 7 all 32- and 64-bit editions, Windows 8/8.1 all 32- and 64-bit editions (excluding RT OS for Tablets), Windows Vista all 32-bit editions (Home Basic, Premium, Professional, etc.), Windows XP SP3 32-bit editions (XP Home, XP Pro, etc.) Mac OS: 10.12 Sierra, OS X 10.10 Yosemite, OS X 10.11 El Capitan Mobile OS: Android™ Linux® Boss (5.0), Linux Debian (7.0, 7.1, 7.2, 7.3, 7.4, 7.5, 7.6, 7.7, 7.8, 7.9, 8.0, 8.1, 8.2, 8.3, 8.4, 8.5, 8.6), Linux Fedora (22, 23, 24), Linux Mint (17, 17.1, 17.2, 17.3, 18), Linux Red Hat Enterprise (6.0, 7.0), Linux SUSE (13.2, 42.1), Linux Ubuntu (12.04, 14.04, 15.10, 16.04, 16.10) Other OS: UNIX®	
Compatible network operating systems	Citrix® MetaFrame Presentation Server 3.0, Citrix MetaFrame XP Presentation Server (Feature Release 1, 2, and 3), Citrix on Windows Server® 2003/2003R2, Citrix on Windows Server 2008/2008R2/2008 R2 SP1, Citrix on Windows Server 2012/2012R2, Citrix Presentation Server 4.0/4.5, Citrix XenApp 5.0 (Plus Feature Pack 2 and 3) for Windows Server 2008 Terminal Services 32- and 64-bit, Citrix XenApp 6.0/6.5 [for Windows Server 2008 R2 Terminal Services, 32- and 64-bit], Citrix XenApp 6.0/6.5/7.5 [for Windows Server 2008 R2 SP1 Terminal Services, 32- and 64-bit], Citrix XenApp 7.5 [for Windows Server 2012 and 2012 R2 Terminal Services, 64-bit], Citrix XenDesktop® 5.6 [for Windows Server 2008 R2 Terminal Services, 32- and 64-bit], Citrix XenDesktop 5.6/7.0/7.5 [for Windows Server 2008 R2 SP1 Terminal Services, 32- and 64 bit], Citrix XenDesktop 7.0/7.5 [for Windows Server 2012 and 2012 R2 Terminal Services, 64-bit] Novell NetWare 6.5/SP8 Novell Clients novell.com/iprint, Novell iPrint Appliance v1.0, Novell Open Enterprise Server 11/SP1, Novell Open Enterprise Server 2 for Linux, Novell Servers novell.com/iprint Windows Server 2003/2003 R2 32-/64-bit (SP1/SP2) Standard/Enterprise/Datacenter (+ Cluster and Terminal Services), Windows Server 2003/2003 R2 32-bit (SP1/SP2), Standard/Enterprise (+ Cluster and Terminal Services), Windows Server 2008 32-/64-bit (SP2) Standard/Enterprise (+ Cluster and Terminal Services), Windows Server 2008 R2 64-bit (SP1) Standard/Enterprise (+ Cluster and Terminal Services), Windows Server 2008/2008 R2 32-/64-bit (SP1/SP2) Standard/Enterprise/Datacenter (+ Cluster and Terminal Services), Windows Server 2012/2012 R2 64-bit Standard/Foundation/Essentials/Datacenter (+ Cluster and Terminal Services), Windows Server 2016/ 64-bit Standard/ Essential/Datacenter (+ Cluster and Terminal Services)	
System requirements, Windows	A compatible operating system (see above), 2 GB available hard disk space, OS compatible hardware (for OS hardware requirements see microsoft.com)	
System requirements, Macintosh	A compatible operating system (see above), 1.3 GB available hard disk space (for operating system compatible hardware requirements see apple.com)	
Dimensions, operating (width x depth x height)	431 x 466 x 380 mm (17 x 18.3 x 15 in)	431 x 466 x 380 mm (17 x 18.3 x 15 in)
Dimensions, maximum (width x depth x height)³¹	431 x 1040 x 453 mm (17 x 40.9 x 17.8 in)	431 x 1040 x 453 mm (17 x 40.9 x 17.8 in)
Weight (with print cartridges)	21.6 kg (47.7 lb)	21.6 kg (47.7 lb)
What's in the box	HP LaserJet Printer, HP Black Original LaserJet Toner Cartridge (~10,500 pages), ²² CD with software drivers and documentation, documentation (Hardware Install Guide), power cord, automatic duplexer (built-in)	

HP LaserJet Enterprise M611dn**HP LaserJet Enterprise M612dn**

Software included	HP Connected, HP Device Experience (DXP), HP PCL 6 Printer Driver, HP Software Installer/Uninstaller, Mac OS Welcome Screen (directs users to 123.HP.com or OS App Source for printer software), online user manuals
Downloadable software	HP Easy Start (Guided Software Install for Windows OS and Mac); HP ePrint Software (ePrint Mobile Driver for Windows); HP ePrint Software (for Windows); HP JetAdvantage Security Manager; ⁶ HP Mobile Printing hp.com/us/en/ads/mobility/overview.html ; HP PCL6 print driver only (no installer for "Add Printer" installs); HP PCL6 print driver with installer, Product Documentation and Support; HP Proxy Agent Software; HP Universal Print Drivers (PCL6 and PS for Windows); ³² Linux/Unix Print Drivers; Mac Software Solution; Printer Administrator Resource Kit; SAP (PS Print Drivers); HP Web Jetadmin; ⁷ Windows driver only solution; Windows Full Software Solution
Warranty	One-year, next-business-day, onsite warranty Warranty and support options vary by product, country and local legal requirements. Go to hp.com/support to learn about HP world-class service and support options in your region.

Environmental and power specifications

	HP LaserJet Enterprise M611dn	HP LaserJet Enterprise M612dn
Environmental ranges		
Temperatures	Operating: 15 to 32.5°C (59 to 90.5°F); Recommended operating: 15 to 27°C (59 to 80.6°F); Storage: -20 to 40°C (-4 to 104°F)	
Relative Humidity	Operating range: 10 to 80% RH; Recommended operating range: 30 to 70% RH; Storage range: 10 to 90% RH	
Acoustic power emissions³³	Ready mode: Inaudible Printing mono, simplex A4 at 62 ppm: 6.9 B(A) printing	Ready mode: Inaudible Printing mono, simplex A4 at 71 ppm: 6.9 B(A) printing
Acoustic pressure emissions (bystander)		
Ready mode	Inaudible (<i>all models</i>)	
Active mode	Printing mono, simplex A4 at 62 ppm: 55 dB(A)	Printing mono, simplex A4 at 71 ppm: 56 dB(A)
Power specifications³⁴		
Power supply	Built-in 115V or 220V (Not dual voltage, power supply varies by part number with # option code identifier) 100–127 V nominal @ ±10% (min 90 V, max 140 V); 50–60 Hz nominal ± 3 Hz (min 47 Hz, max 63 Hz); 12 A 220–240 V nominal @ ±10% (min 198 V, max 264 V); 50–60 Hz nominal ± 3 Hz (min 47 Hz, max 63 Hz); 6 A	
Power consumption	Active: 780 watts, Ready: 15.3 watts, Sleep: 3.1 watts, Off/Auto-off: <0.1 watts	
Typical electricity consumption (TEC)	2.425 kWh/week (Blue Angel); 2.622 kWh/week (ENERGY STAR)	2.948 kWh/week (Blue Angel); 3.173 kWh/week (ENERGY STAR)
Energy-saving features	HP Auto-On/Auto-Off Technology; ¹⁹ Instant-On Technology; Instant-On Copy	
Environmental specifications	All models: Blue Angel compliant, ENERGY STAR® certified; CECP; EPEAT® Silver ³⁵ Plus optional EPEAT® Gold ³⁵	
Safety and regulatory compliance	IEC 60950-1:2005 +A1:2009 +A2:2013 (International); EN60950-1:2006 +A11:2009 +A1:2010 +A12:2011 +A2:2013 (EU); EN 60825-1:2007 / IEC 60825-1:2007 (Class 1 Laser Product); EN 62479:2010 / IEC 62479:2010; Low Voltage Directive 2006/95/EC with CE Mark (Europe); GS Certificate (Germany, Europe); UL/cUL Listed and UC CoC (US/Canada); CAN/CSA C22.2 No. 60950-1-07 2nd Ed. 2011-12; Compliance with Laser safety standards 21 CFR 1040.10 and 1040.11 except for deviations pursuant to Laser notice No. 50, dated June 24, 2007; Other safety approvals as required by individual countries	
Electromagnetic emission standard	CISPR 22:2008 (International) – Class A; EN 55022: 2010 (EU) – Class A; EN 61000-3-2: 2006 +A1: 2009 +A2: 2009; EN 61000-3-3: 2008; EN 55024: 2010; EMC Directive 2004/108/EC; FCC CFR 47 Part 15 Class A / ICES-003, Issue 5 Class A; Other EMC approvals as required by individual countries	

Ordering information

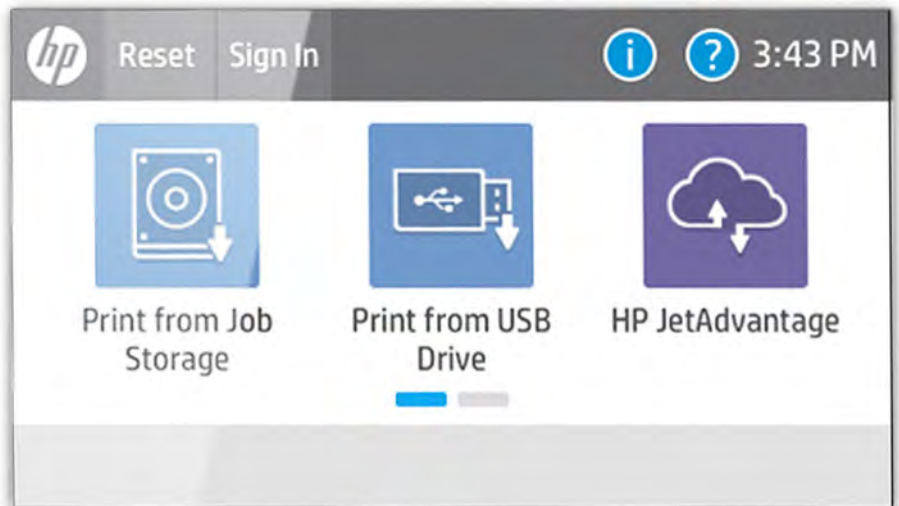
Use accessories and supplies specifically designed for the printer to help provide efficient performance. To order the accessories and supplies listed here, go to hp.com. To contact HP by country, please visit hp.com/go/contact. If you don't have access to the Internet, contact your qualified HP dealer.

LaserJet	HP LaserJet Enterprise M611dn HP LaserJet Enterprise M612dn	7PS84A 7PS86A
Supplies	HP 147A Black Original LaserJet Toner Cartridge (~10,500 pages) ²² HP 147X High Yield Black Original LaserJet Toner Cartridge (~25,200 pages) ²² HP 147Y Extra High Yield Black Original LaserJet Toner Cartridge (~42,000 pages) ²² HP LaserJet 220V Maintenance Kit (225,000 pages) HP Staple Cartridge Refill (5,000 staples)	W1470A W1470X W1470Y LOH25A J8J96A
Accessories	HP LaserJet 550-Sheet Paper Feeder HP LaserJet 2100 Sheet Paper Feeder HP LaserJet Printer Stand HP LaserJet Stapler/Stacker/Mailbox HP LaserJet Envelope Feeder HP LaserJet Extension Tray Cover HP Accessibility Assistant HP 1GB 90-Pin DDR3 TAA Version DIMM HP Removable Hard Drive Enclosure HP Jetdirect 3100w BLE/NFC/Wireless Accessory HP TAA Version Secure Hard Disk Drive HP Internal USB Ports HP Secure High Performance Hard Disk Drive HP SmartCard NIPRNet Solution for U.S. Government HP Int USB Ports Bulk M604/605/606 Accessory HP 1GB 90-Pin DDR3 DIMM HP USB Universal Card Reader HP HIP2 Keystroke Reader HP Legic Reader	LOH17A LOH18A LOH19A LOH20A LOH21A LOH22A 2MU47A 2NR03A 2NR12A 3JN69A 5EL03A B5L28A B5L29A CC543B F2A86A G6W84A X3D03A Y7C05A 4QL32A
HP Services	<p>Make sure your imaging and printing investments are protected with Care Pack, part of HP Care. Pick your package of services to keep your printer running and your business moving. Now your office can spend less time trouble-shooting and more time getting things done. For details, visit hp.com/go/cpc.</p> <p>Improve performance—it's your choice. HP Care provides options to help you manage imaging and printing—from Care Pack services to customisable and advisory services. With HP Managed Print Services, we oversee everything for you.</p>	<p>HP 3-year Next Business Day + Defective Media Retention LJ Ent M611 Hardware Support U9NE0E HP 5-year Next Business Day + Defective Media Retention LJ Ent M611 Hardware Support U9NE2E HP 1-year Post Warranty Next Business Day + Defective Media Retention LJ Ent M611 HW Support U9NG4PE HP 3-year Next Business Day + Defective Media Retention LJ Ent M612 Hardware Support U9MZ0E HP 5-year Next Business Day + Defective Media Retention LJ Ent M612 Hardware Support U9MZ2E HP 1-year Post Warranty Next Business Day + Defective Media Retention LJ Ent M612 HW Support U9NB4PE</p>
Solutions	<p>HP Web Jetadmin: hp.com/go/wja HP Universal Print Driver: hp.com/go/upd HP JetAdvantage Security Manager: hp.com/go/securitymanager HP JetAdvantage On Demand Cloud Solutions: hp.com/go/JetAdvantageondemand HP LaserJet fonts, barcodes, and IPDS Emulation available at hp.com/go/laserjetfonts To learn more about available infrastructure, management, and workflow solutions, visit hp.com/go/printing_solutions</p>	

Appendix A: Control panel features

Upgrade to a modern interface

The HP LaserJet Enterprise M611 dn and M612dn are powered by HP FutureSmart 4.0 firmware. Its modern, tablet-like interface keeps things simple and intuitive across your fleet of enterprise devices. A scalable control panel interface improves future extensibility and provides a robust set of new apps and usability features. The new Message Center, with more detailed information and helpful animations, makes it easy to address device events. The simplified home screen displays just three core apps by default on the 10.9 cm colour graphics display. Additional apps are easily accessed by swiping right to left, like with a smartphone or tablet.



Troubleshoot with ease

The HP LaserJet Enterprise M611 dn and M612dn can help save your IT department valuable time when it comes to troubleshooting problems. The Remote Control Panel allows users to operate the user interface remotely, so IT can troubleshoot problems without running to the printer.³⁷ Users can also quickly troubleshoot technical issues with HP's innovative, cloud-based Online Help services that are relevant and up to date. Easily solve problems from your PC or mobile device. A Quick Response (QR) code on the touchscreen links to Online Help using smart phones and tablets.³⁸ You can also find these links in the HP Embedded Web Server event log.



1. Based on HP review of 2019 published features of competitive in-class printers. Only HP offers a combination of security features to automatically detect, stop, and recover from attacks with a self-healing reboot, in alignment with NIST SP 800-193 guidelines for device cyber resiliency. For a list of compatible products, visit: hp.com/go/PrintersThatProtect. For more information, visit hp.com/go/PrinterSecurityClaims.
2. Based on the reduced energy use of HP LaserJet printers and cartridges with JetIntelligence introduced since 2015 compared to previous toner versions without JetIntelligence, using ENERGY STAR® methodology.
3. Some features require additional purchase. A FutureSmart service pack update may be required to activate security features. Learn more at hp.com/go/printsecurity.
4. HP Proximity Card Reader (CZ208A) is available for separate purchase for select HP devices with Hardware Integration Pocket (HIP) and touchscreen display.
5. Solutions deployed through the Hardware Integration Pocket (HIP) may require additional purchase.
6. Use of the HP Trusted Platform Module accessory may require a firmware upgrade.
7. HP Web Jetadmin is available for download at no additional charge at hp.com/go/wja.
8. HP JetAdvantage Security Manager must be purchased separately. For details, see hp.com/go/securitymanager.
9. HP JetAdvantage Secure Print works with any network-connected printer or MFP. On-device authentication is available for many HP LaserJet, PageWide, and OfficeJet Pro devices and selected non-HP devices. Some devices may require a firmware upgrade. Internet connection required for cloud storage and retrieval of print jobs. Print-job release from a mobile device requires a network connection and QR code. For more information and a list of supported printers and MFPs, see hp.com/go/JetAdvantageSecurePrint.
10. Measured using ISO/IEC 17629. Exact speed varies depending on the system configuration, software application, driver, and document complexity. Learn more at hp.com/go/printerclaims.
11. Measured after 15 minutes in sleep. Exact speed varies depending on the system configuration, software application, driver, document complexity, and time in sleep.
12. Measured using ISO/IEC 24734; excludes first set of test documents. For more information, see hp.com/go/printerclaims. Exact speed varies depending on the system configuration, software application, driver, and document complexity.
13. Measured using ISO 24734 Feature Test, A5 Landscape Feed. Speed may vary based on content, PC, media orientation, and media type. A5 landscape printing cannot be duplexed.
14. Wi-Fi Direct printing can be added with the purchase of the optional HP Jetdirect 3000w NFC/Wireless Direct Accessory. Mobile device needs to be connected directly to the signal of a Wi-Fi Direct® supported MFP or printer prior to printing. Depending on mobile device, an app or driver may also be required. For details, see hp.com/go/mobileprinting. Wi-Fi Direct is a registered trademark of Wi-Fi Alliance®.
15. Requires purchase of server software such as HP PrinterOn Enterprise or HP Access Control Secure Pull Printing. Learn more at hp.com/go/businessmobileprinting.
16. Purchase of optional paper trays required to reach maximum input capacity.
17. An administrator must enable the easy-access USB port before use.
18. Energy claim based on TEC data reported on energystar.gov as of January 2017. Data normalised to determine energy efficiency of in-class laser printers with published speed of 55 to 75 ppm (letter). Subject to device settings. Actual results may vary.
19. HP Auto-On/Auto-Off Technology capabilities are subject to printer and settings.
20. Compared with products that use traditional fusing.
21. HP 37X High Yield and 37Y Extra High Yield Black Original LaserJet Toner cartridges are not included in printer purchase; purchase separately. Learn more at hp.com/go/learnaboutsupplies.
22. Toner cartridge yields established using ISO/IEC test standards. Actual yields and costs vary considerably depending on images printed, number of colour pages printed, and other factors.
23. All models come standard with the 100-sheet multipurpose tray and 550-sheet tray 2. The M611dn and M612dn models can add up to four additional optional 550-sheet paper feeders and the optional 2,100-sheet HCl feeder.
24. Touch-to-print capability is optional for all models with purchase of the optional HP Jetdirect 3000w NFC/Wireless Direct Accessory. Mobile device must support Near Field Communication (NFC)-enabled printing. For more information, see hp.com/go/businessmobileprinting.
25. Wireless networking is optional for all models with purchase of the optional HP Jetdirect 3100nw BLE/NFC/Wireless Accessory (3JN69A). Wireless performance is dependent on physical environment and distance from access point, and may be limited during active VPN connections.
26. HP recommends that the number of printed pages per month be within the stated range for optimum device performance, based on factors including supplies replacement intervals and device life over an extended warranty period.
27. Duty cycle is defined as the maximum number of pages per month of imaged output. This value provides a comparison of product robustness in relation to other HP LaserJet or HP Color LaserJet devices, and enables appropriate deployment of printers and MFPs to satisfy the demands of connected individuals or groups.
28. Printer requires ePrint account registration. App or software may be required. Wireless operations are compatible with 2.4 GHz operations only. Learn more at hp.com/go/mobileprinting.
29. Supports the following devices running iOS 4.2 or later: iPad, iPad 2, iPhone (3GS or later), iPod touch (third generation or later). Works with HP's AirPrint-enabled printers and requires the printer be connected to the same network as your iOS device. Wireless performance is dependent on physical environment and distance from the access point.
30. Full solution software available only for Windows 7 and newer, UPD software available only for Windows 7 and newer, HP Software for Mac and Windows is no longer included on the CD, but can be downloaded from 123.hp.com, Legacy Windows Operating Systems (XP, Vista, and equivalent servers) get print and Scan drivers only with a reduced feature set, Windows RT OS for Tablets (32- and 64-bit) uses a simplified HP print driver built into the RT OS.
31. Maximum dimensions of the device are measured with all paper trays folded out and standard accessories installed.
32. The HP Universal Print Driver is available for download at no additional charge at hp.com/go/upd.
33. Acoustic values are subject to change. For current information, see hp.com/support.
34. Power requirements are based on the country/region where the scanner is sold. Do not convert operating voltages. This will damage the device and void the product warranty.
35. EPEAT® registered where applicable. EPEAT registration varies by country. See epeat.net for registration status by country.
36. Service levels and response times may vary depending on your geographic location. Service starts on date of hardware purchase. Restrictions and limitations apply. For details, visit hp.com/go/cpc.
37. Availability dependent on firmware or software updates or upgrades.
38. Online Help must be enabled on the printer or MFP. Mobile device must have an Internet connection to access online services.

Sign up for updates
hp.com/go/getupdated



© Copyright 2017–2020 HP Development Company, L.P. The information contained herein is subject to change without notice. The only warranties for HP products and services are set forth in the express warranty statements accompanying such products and services. Nothing herein should be construed as constituting an additional warranty. HP shall not be liable for technical or editorial errors or omissions contained herein.

AirPrint, Apple, iPad, iPhone, and iPod touch are trademarks of Apple Inc. Android and Google Cloud Print are trademarks of Google Inc. Bluetooth is a trademark owned by its proprietor and used by HP Inc. under license. Citrix and XenDesktop are registered trademarks of Citrix Systems, Inc. and/or one more of its subsidiaries, and may be registered in the United States Patent and Trademark Office and in other countries. ENERGY STAR is a registered trademark owned by the U.S. Environmental Protection Agency. Linux is the registered trademark of Linus Torvalds in the U.S. and other countries. Microsoft, Windows, Windows Server, and Windows Vista are U.S. registered trademarks of the Microsoft group of companies. UNIX is a registered trademark of The Open Group. Wi-Fi Direct is a registered trademark of Wi-Fi Alliance.

